

RoadtrekTM®

The Motorhome That...



...Drives Like a Van! TM [®]



The Motorhome

The open road

Few things can match the thrill and pure excitement of taking to the highway and roaming the country at your leisure.

And when you set off in a Roadtrek Motor Home Van, you're taking all the comforts of a larger Class 'A' or 'C' motor home with you, in a vehicle that is as easy to drive as the family wagon.

Comfort and Space Abound

Slide behind the wheel of a Roadtrek and you instantly realize that you sacrifice nothing when it comes to comfort and space.

Equipped with adjustable lumbar supports that were orthopedically designed in Austria, the front captain's seats cradle your back in comfort that rivals even the most luxurious automobiles. In fact, they are the same supports used by Porsche and Mercedes.

The captain's seats are constructed using the superior process of High Resilience Molding (HRM) – the same method automobile manufacturers use. Most other RV manufacturers use a process called fabrication in which foam is cut up and glued together to achieve the seat's desired shape. This method is prone to early breakdown with subsequent loss of shape and support. The HRM process used to make our captain's seats makes each component one consistent piece of molded foam which will retain its shape and support for years to come.



The cab area is also living area for eating, entertaining or just relaxing. Our patented cloverleaf dining table with extendible/retractable leaves combines the large surface area of a kitchen table with the compact convenience of a cocktail table.

Interior headroom for persons up to six feet tall is created through an ingenious combination of raising the roof with the exclusive Roadtrek custom fibreglass roof AND lowering the floor. No more hunching. No more crouching.

Once the day is done, simply swivel the two captain's seats around and create a comfortable roomy living area. Then, when it's time to turn in, Roadtreks can sleep up to four in superior comfort. One or two single beds up front and up to a king-sized bed in the rear (depending on the model). Made of dual-density foam that gives the feel of box springs, you are guaranteed sweet dreams without a bump, sag or gap.

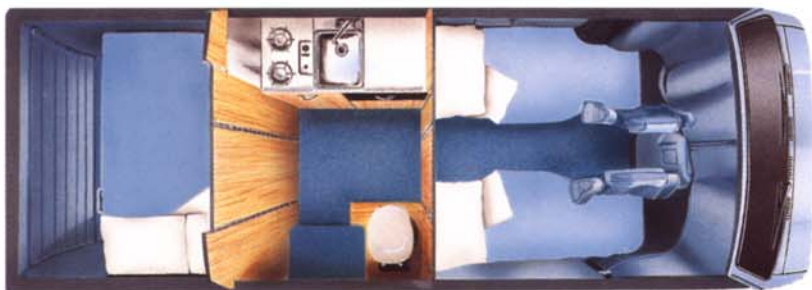
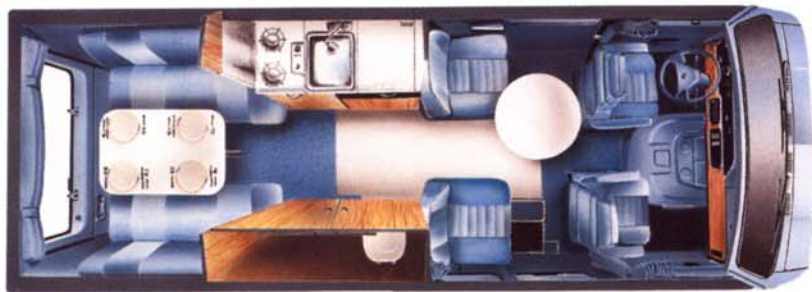
Roadtrek Redefines Privacy

The secret to privacy in a Roadtrek is that you can create it when you want it and then simply store it away when you don't.

Instead of forcing you into a small permanent bathroom as is the case in even larger motor homes, Roadtreks let you create a spacious temporary bathroom. When not needed, the marine-type toilet is concealed within the closet – completely out of the way.

The same folding closet doors that create the bathroom privacy area can be used to separate sleeping quarters when the sun goes down. Yet, because it is centrally

You can never have too many closets. Roadtrek's unique storage floor gives you even more.



Our three section floor plan provides many advantages over other camper van designs: forward facing seating for 4 while driving, private sleeping sections, aisle maintained when beds are set up, all beds at floor level, easy access to centrally located bathroom/privacy area, 30" wide aisle where 2 people can pass with ease, possible separate eating and sleeping sections for 2, and choice of front or rear eating areas.



located, the bathroom is accessible from either sleeping compartment.

Privacy. It's yours when you want it in a Roadtrek.

The Storage Space Race

One of the measures of a truly functional motor home is the amount of useful, accessible storage space it offers. And Roadtreks measure up very nicely. When equipped with our over-cab storage drawer and removable wardrobe, our 190-Versatile has 73 cubic feet of practical storage space. And for the most storage in a low profile camper van, our 210-Popular offers up to 92 cubic feet.

A major factor in Roadtreks' abundant storage space is that the water tanks are custom made to fit below the floor – not inside the living compartment where they use up valuable space. And if you need more, there is more below-the-floor space in our storage trunk at the rear of most models.

Inside, from front to back and floor to ceiling, space is thoughtfully defined and utilized. None is wasted.

Going the Extra Mile

The fuel efficiency of any vehicle is directly dependent upon its aerodynamics, overall weight and engine efficiency.

All Roadtrek Motor Home Vans are built using either a Dodge or Chevy van. (Ford vans are not used as they are incompatible with the requirements of Roadtrek designs.) In all cases, the engine will meet the demands placed on it while delivering performance and peak efficiency.

The aerodynamics of Roadtreks truly set them apart from their larger Class 'A' and 'C' cousins and high-top Class 'B's. The roof is designed to maintain a low sweeping profile, raising wind efficiently up and over its highest point. Air then slips effortlessly along the rearward slope of the roof and down the tapered rear of the vehicle.

All hoses, connections, power cords and valves are located behind a flush mounted access door to minimize drag. Rather than using a bulky conventional roof-mounted unit, the Roadtrek's air conditioner is built into the rear upper cabinets. This



Roadtrek is by far the most aerodynamically efficient camper van on the market today. Sleek lines, low profile and light weight work together to optimize fuel efficiency and improve handling.

maintains the low clean roofline with only the flush-mounted grills visible at the rear.

One look at the clean, uninterrupted lines of a Roadtrek Motor Home Van will move you. One drive will show you how efficient, effortless and economical the experience is.



A 110V Fedders air conditioner built into the upper rear cabinets cools the interior while maintaining Roadtrek's aerodynamic shape and sleek roofline.

Get a Handle on Handling

Getting off the beaten path can mean different things to different people. It often means places you wouldn't dream of taking a larger motor home.

Yet for all their interior spaciousness, comfort and amenities, Roadtreks remain nimble, responsive and a pleasure to drive. By locating water tanks between the axles for better weight distribution, handling is greatly improved.

They perform on the highway with ease. They take you into the deep woods and out again. You can manoeuvre confidently in congested city traffic and back into a parking spot without problem.

So follow the road. Wherever it leads, a Roadtrek Motor Home Van can handle it.



Water tanks are custom made to fit below the floor, which maximizes interior storage space. Locating them between the axles improves weight distribution for better handling.

much storage space so
ge trunk beneath the rear
ore.



The Van

Practical Everyday

With 3 or 4 forward facing seats, many people use their Roadtrek as their second family vehicle, as well as the family camper. And with good reason. It's safe, roomy, easy to drive and economical to operate. Or use your Roadtrek to haul large items – its aisle is open from front to rear.

When you own a vehicle that is as well built as a Roadtrek, don't save it just for vacations. Use it every day.

Innovation at its Best

Roadtrek Motor Home Vans are a testament to original thinking. Nothing is left to chance. No detail overlooked.

Our patented "Dura Drain" sewage hose system provides a permanently attached built-in sewage hose that eliminates messy handling and storage.



No alternative unexplored. With no fewer than 18 Canadian and U.S. patents (and more pending) Roadtreks are the most innovative camper vans on the road today.

Thanks to our "Integrated Venting System", the refrigerator vent is disguised and integrated into a black louvered grill in the bottom of the galley window. The fresh water fill is located inside the passenger door to improve both looks and security.

Awning windows provide superior air circulation even during foul weather. The Integrated Venting System provides effective yet inconspicuous ventilation of the refrigerator.



Large awning windows, first used in a camper van by Roadtrek and copied by many competitors today, remain functional in the rain without the worry of getting the interior wet, and provide ventilation superior to conventional sliders.

Our patented "Dura-Drain" Sewage Hose System provides a built-in sewage hose that is always attached to the waste tanks. No more retrieving a messy sewage hose from a bumper box, attaching it to the

tanks, emptying them and then handling, cleaning and storing the dirty hose.

Patented clover leaf dining table. Patented bathroom/privacy area. Lowered floor. Built-in air conditioner. Rear storage trunk. Under floor tanks. Shower that doubles as a wardrobe. Dual-layer foam beds. The list of intelligent innovations is long but the one that intrigues the creators of Roadtreks the most is the next one – the one still waiting to be uncovered.

The "More Than A Van" Camper Van

All the comfort of a larger motor home. All the ease, peace of mind and efficiency of driving a van.

Take to the highway in a Roadtrek Motor Home Van. You'll never look back.



A Roadtrek Motor Home Van is a pleasure to drive. You can go on excursions deep into the heart of the city without worrying about things like parking.



With the 210, 170 and 190 series offering a broad range of standard equipment and options, there is a Roadtrek motor home van that will fit you and your family like a glove.

The 190-Versatile



The One That Started It All

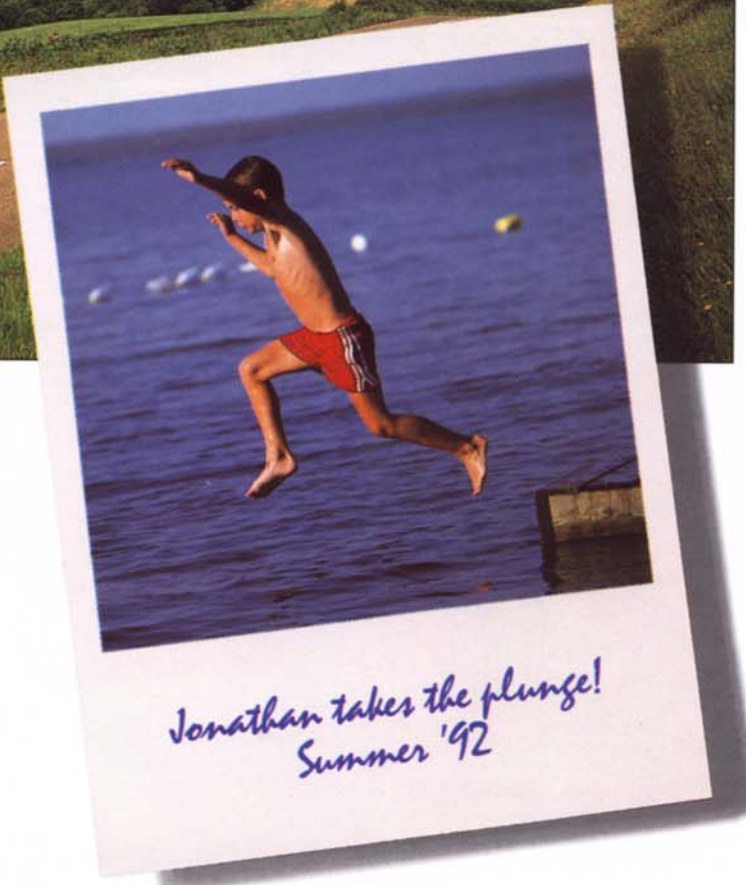
Whether it's just the two of you or you bring the kids along, the 190-Versatile is the perfect getaway vehicle for vacations or weekends. It's the affordable alternative to motel rooms and restaurants.

The two captain's seats and two front lounge seats offer comfortable seating for four during the day. And, when the day is done, they quickly convert to two single beds for a good night's sleep. The rear dinette turns into a large double bed while the privacy doors let you watch television or read without disturbing the sleepers up front.

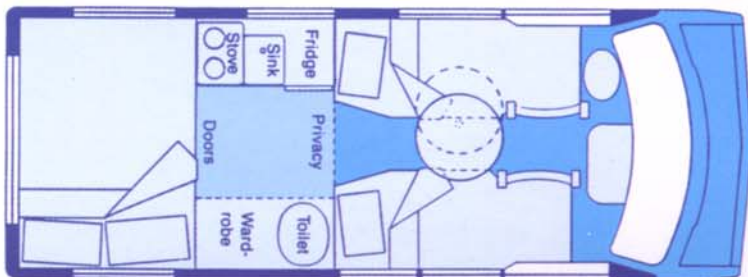
Hit the beach for a few days or the campground of your choice. With the standard galley and bathroom, it's the ideal way for you and your family to go exploring.

And when you're not on the road, the 190-Versatile serves well as the second family vehicle with seating for 4 in forward facing seats.

Affordable. Practical. Fun. The Roadtrek 190-Versatile is a camper you can live with.



190-Versatile

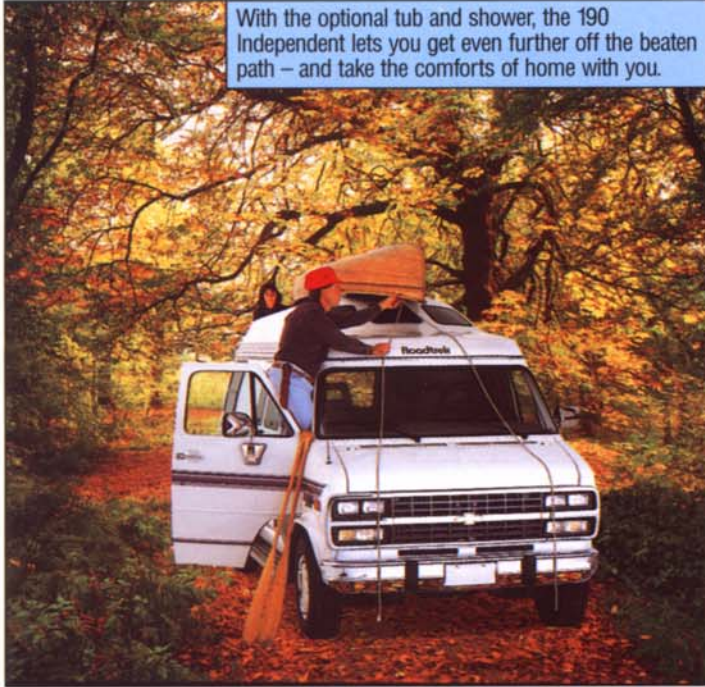


The 190-Versatile galley comes equipped with 3.0 cu.ft. 3-way refrigerator, microwave oven, LP gas stove, exhaust fan, sink and 6 feet of standing head room (same as 190-Independent).

The 190-Independent

Top of the Line in the 190 Series

You like the overall look and style of the 190. It's the perfect size for your needs, but you're looking for that extra something that puts it in the full featured category, and gives you that extra dimension of freedom.



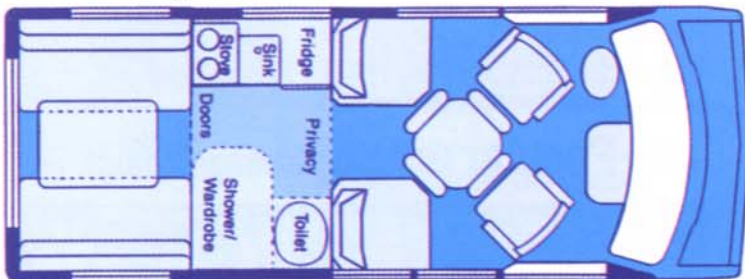
With the optional tub and shower, the 190 Independent lets you get even further off the beaten path – and take the comforts of home with you.

The 190-Independent offers you all the features of a Roadtrek 190-Versatile PLUS the added advantage of a shower and tub. (See picture on next page under 210-Popular).

Now you don't have to rely on the next campground if you don't want to. You can spend that extra time on your own with all the comforts of home at hand.

As expected the two captain's seats combine with the lounge seats to form two very restful single beds while the rear dinette converts to a large double bed. Take to the highway in the 190-series Roadtrek that lets you assert your independence.

190-Independent



*The "men only" fishing trip.
July '91*



On vacation, you can quickly remove the lounge seat behind the driver and install our removable wardrobe. After you're back from vacation, just remove the wardrobe, return the lounge seat and you have 4 seats at the front again.

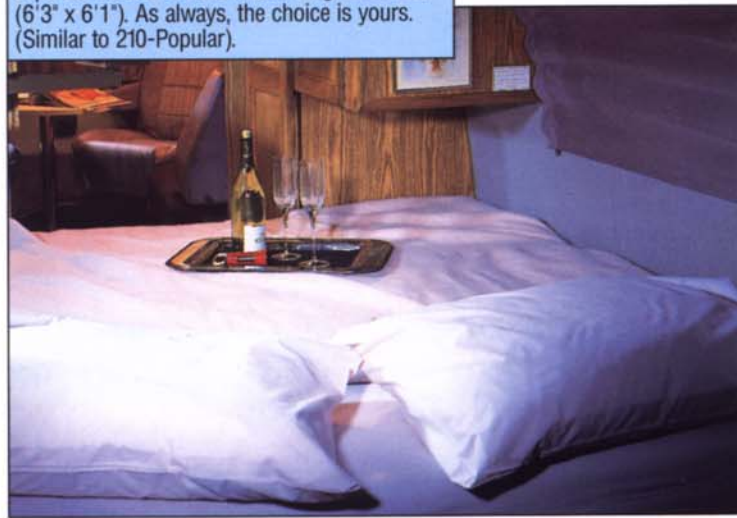
The large double bed (6'1-1/2" x 52") of 5" thick dual density foam provides firm, comfortable support – just like your bed at home (same as 190-Versatile).



The 190-Popular



The 190 Popular offers you flexible sleeping arrangements. Dinette converts to twin beds (6'3" x 30" and 6'1" x 30") if you prefer separate beds or an enormous king-sized bed (6'3" x 6'1"). As always, the choice is yours. (Similar to 210-Popular).



The Roadtrek Built for Two

It's time to hit the road. Just the two of you. Seeing the country close up, on your own terms. No timetable. No tour guides.

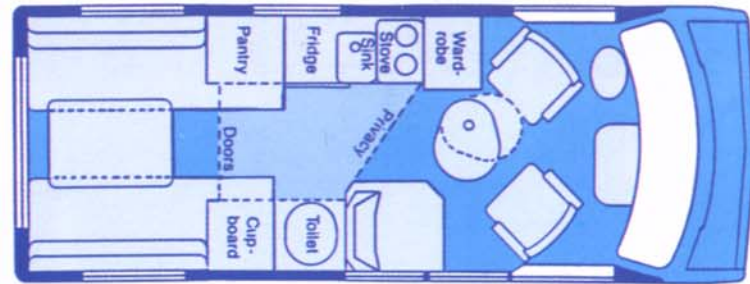
Sure you want to see the big city lights. But the Northern Lights are just as beautiful so you wouldn't miss them for the world.

As in all Roadtreks, two captain's seats up front keep you as refreshed at the end of a day's drive as you felt at the beginning. Important to know since the day doesn't always end just because the sun goes down.

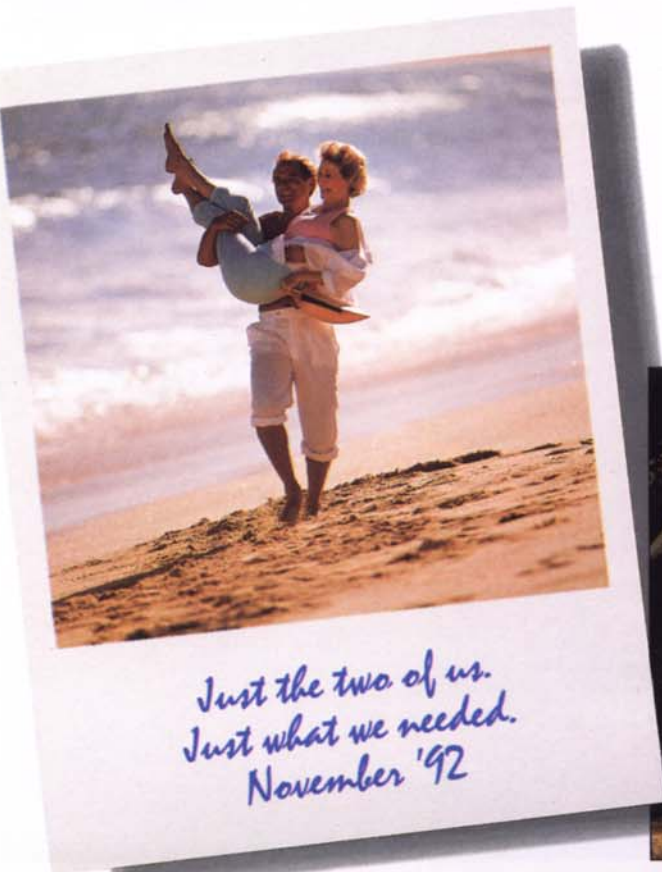
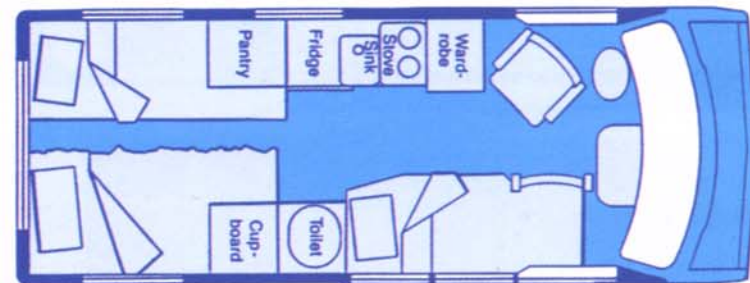
When it is time to call it a night, the dinette converts to either two very comfortable twin beds or an enormous king-size bed. The choice is yours.

The full-length wardrobe, standard galley and "pear" shaped cocktail table complete the 190-Popular making it the logical vehicle for the two (or three) of you to get to know your neck of the woods a little better. And be comfortable doing it.

190-Popular (living arrangements)



190-Popular (sleeping arrangements)



*Just the two of us.
Just what we needed.
November '92*



On the open road Roadtreks handle with the ease, agility and efficiency of a van.

The 210-Popular

The Biggest and The Best

This is it. The only 21-foot Class 'B' motor home. The ultimate Roadtrek Motor Home Van.

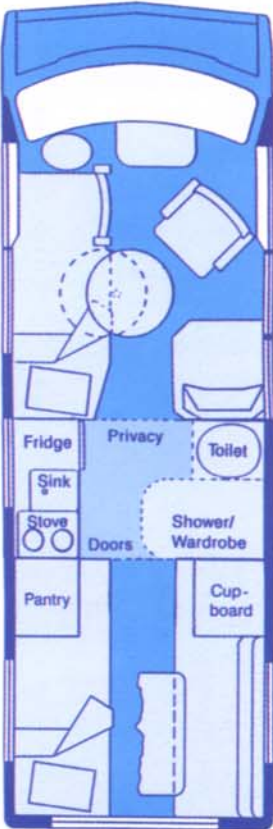
You are at that point in your life when you deserve the best. You've worked hard. You've earned it.

The 210-Popular is for those of you who want to combine twin beds or a king-sized bed with front seating for four, or with a shower, or with both.

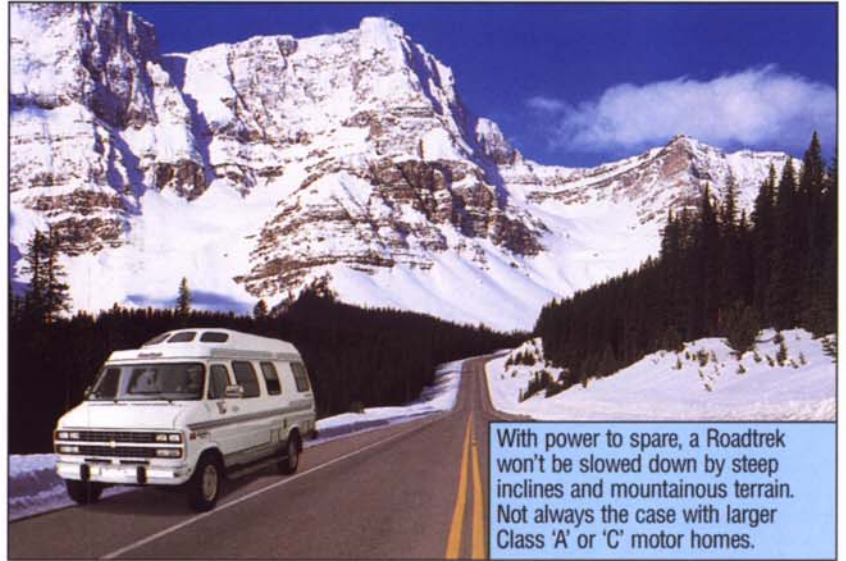
The two captain's seats and two lounge seats can be used with the round dining table to create a very relaxing living or dining area and they quickly convert to two single beds. The 210-Popular features a standard galley with or without the tub and shower – it's your choice. The dinette converts to twin beds or a king-size bed that are even longer than those of the 190-Popular! (6'4" versus 6'3" or 6'1".)

When you're travelling in the Roadtrek 210-Popular, you're travelling with the most style, luxury and convenience available in a camper van.

It simply doesn't get any better than this.



210-Popular



With power to spare, a Roadtrek won't be slowed down by steep inclines and mountainous terrain. Not always the case with larger Class 'A' or 'C' motor homes.

Whether you're playing cards or putting on the Ritz, the spacious rear dinette provides a comfortable eating and entertaining area for four (similar to 190-Popular). The swiveling TV shelf in all models allows you to watch TV in bed or swing it into the aisle to watch in comfort from the front captain's seats.



The 210's galley is fully equipped with all the features of a 190-Versatile or 190-Independent (3.0 cu.ft. 3-way refrigerator, microwave oven, LP gas stove, exhaust fan and sink) plus the pantry and cupboard over the foot ends of the beds offered in the 190-Popular.

The combination shower/wardrobe gives you the advantage of full bathing facilities while maintaining valuable closet space. When you want to shower, just swing the wardrobe shelf and rack (with the clothes still on the hangers) out over the bed, fold down the tub cover, and draw the curtain.



The 170-Versatile

Not your typical van conversion

You have a growing family and a van conversion seems to be the practical solution to your need for room and comfort.

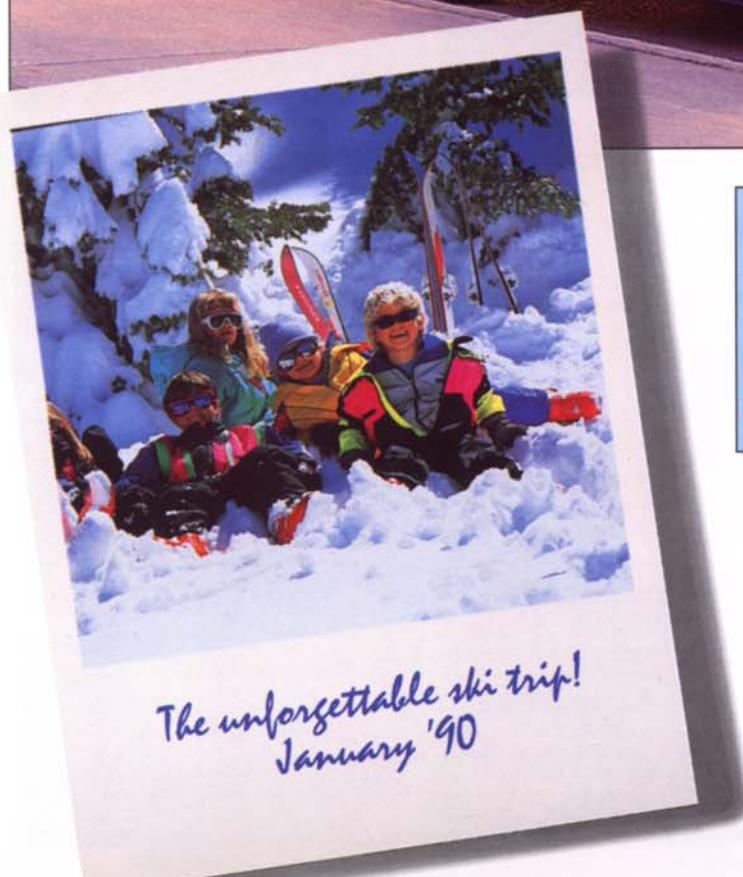
Typically, van conversions consist of a standard 17-foot van with 4 captain's seats, a flip down bed, a lot of extra interior and exterior trim and maybe a few very basic conveniences like an ice box or portable toilet. Great to look at but not very functional for anything more than driving.

The 170-Versatile definitely is not typical. It seats 4 very comfortably and provides excellent storage space just like a van conversion. Add to that comfortable sleeping for 4

(in a rear double and 2 single beds), the fridge, stove, sink, microwave oven, large temporary bathroom with marine toilet and furnace as standard equipment. Now add the optional air conditioner, generator and aisle shower, and the 170-Versatile leaves van conversions in the dust.

As a second vehicle, or even the family's only vehicle, the 170 gives you the ease and practicality of a standard size van with the added advantage of taking to the road for an affordable self-contained family getaway.

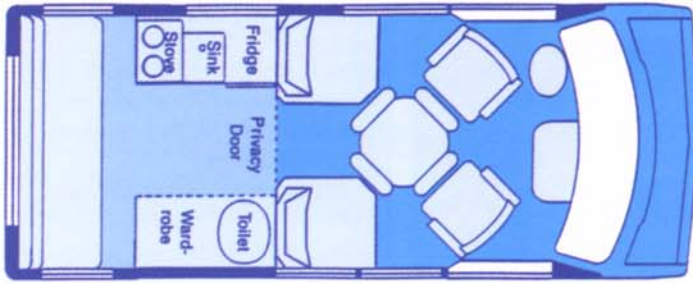
Compare the convenience. Compare the comfort. Compare the value. Compared to the standard van conversion, the 170-Versatile is far from typical.



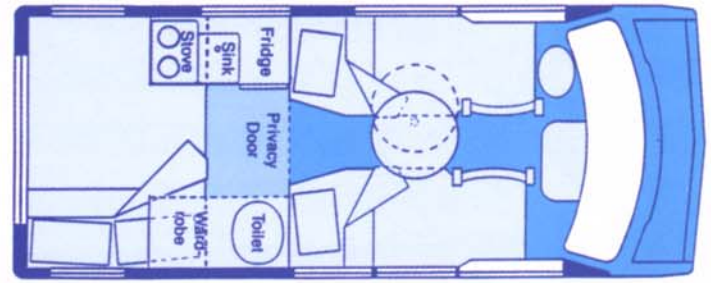
In a matter of seconds you can use the optional stand-up shower in the aisle of the 170-Versatile. What van conversion can give you that kind of convenience?



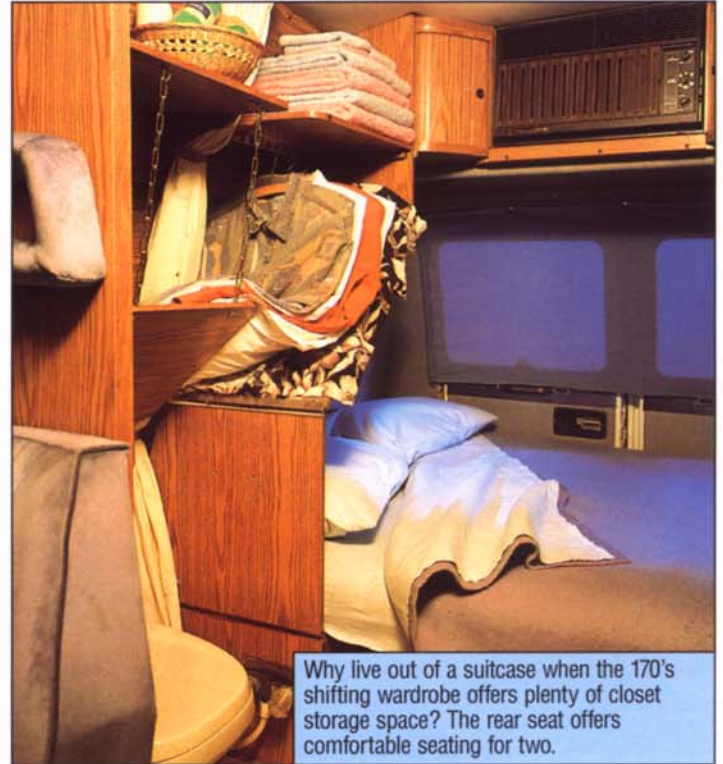
170-Versatile (living arrangements)



(sleeping arrangements)



To quickly and easily convert the rear seat to a roomy double bed, move the shifting wardrobe which swings the clothes over the toilet. Support the bottom of your clothes with the swing-up shelf to maintain access to the toilet. For space at the foot of the bed, just remove the 2 drawers from below the stove and store them under the bed.



Why live out of a suitcase when the 170's shifting wardrobe offers plenty of closet storage space? The rear seat offers comfortable seating for two.





Come visit us at our new 120,000 square foot modern manufacturing facility. Starting June 1st 1993, plant tours are available Monday through Friday 10:00 a.m. and 2:00 p.m. We are closed weekends, between Christmas and New Year and all Canadian holidays.

Since space is limited, call our plant tour desk at 1-800-663-0066 to make a reservation.

To get to our new plant from Highway 401, take the Highway 8 west exit (to Kitchener) to Highway 7 east. Proceed on Highway 7 to Wellington Street east and then to Shirley Avenue. Turn right (south) and follow Shirley Avenue to our dark brown plant on your right at 100 Shirley Avenue.

Own an Original

The Home & Park Roadtrek is the result of one man's determination to get exactly what he wanted in a recreational vehicle.

Having no interest in being a "week-end busdriver" Mr. Jac Hanemaayer of Kitchener Ontario knew a full-size Class 'A' or 'C' motor home was not for him. Yet he was not about to trade the comfort and amenities they offered for the convenience and mobility of a van. Unable to find the best of both worlds in the market, he did what came naturally to him. He designed one for himself and had it built by a local camper van manufacturer named Home & Park Vehicles Ltd.

He was so pleased with the result that he bought the company.

Being a true innovator, Mr. Hanemaayer was never content. In 1980, he completely re-designed the vehicle incorporating his now-famous sweeping roof line, lowered floor and three-section floor plan. The Roadtrek Motor Home Van was born.

After numerous refinements that keep it one step ahead of the competition, Roadtrek has grown to become the best selling North American Class 'B' motor home (since 1990) with dealers across North America, Europe and Japan!

It Starts with Quality

While Roadtrek is a truly innovative design, its success over the years is attributable primarily to an unwavering commitment to quality.

Every Home & Park Roadtrek meets and very often exceeds rigid RVIA and CSA recreational vehicle standards. Each



We keep a large selection of finished units on hand so you don't have to wait long to hit the highway in the new Roadtrek of your choice.

is individually constructed with painstaking care and attention paid to even the smallest detail.

Backed with Pride

We believe the best built should be the best backed.

Reflecting the confidence and pride we have in the craftsmanship found in our vehicles, we offer an industry leading 3-year or 36,000 mile/60,000 kilometre Motor Home Warranty.

Loyalty Says it Best

In a recent survey of nearly 2000 Roadtrek owners, of those planning to buy another RV, 85% of respondents were going to buy another Roadtrek. Many for the second, third and even fourth time. Only 2% of respondents intended to buy a different Class 'B'!

After all, what better vote of confidence could a camper van receive than one given by the people who use it.



1994 marks the 20th anniversary for Home & Park Motorhomes. From one man's idea of what a motor home should be to the number one selling North American Class 'B' motor home in just 20 short years. Just imagine what the next 20 will bring.

Specifications

AUTOMOTIVE FEATURES	DODGE B350 MAXIVAN	CHEVY G30 EXTENDED VAN	CHEVY G20 STANDARD VAN
Air bag	not available	not available	standard
Air conditioning	automotive	automotive	automotive
Alternator	120 amp.	100 amp.	100 amp.
Axle – rear	3.90 ratio	4.10 ratio	3.42 ratio
Battery	810 amp.	630 amp.	630 amp.
Brakes	power with rear anti-lock	power with four wheel anti-lock	power with four wheel anti-lock
Cruise control	electronic	electronic	electronic
Door locks	power – all doors	power – all doors	power – all doors
Doors	double right side & rear single	double right side & double rear	double right side & double rear
Engine – standard gas	5.2 L/318 CID EFI gas V8	5.7 L/350 CID EFI gas V8	5.7 L/350 CID EFI gas V8
Engine – optional gas	5.9 L/360 CID EFI gas V8	7.4 L/454 CID EFI gas V8	not available
Engine – optional diesel	not available	6.5 L/397 CID diesel V8	6.5 L/397 CID diesel V8
Fuel capacity	132 L/35 US gal.	125 L/33 US gal.	125 L/33 US gal.
Mirrors	power – 9" x 6"	power – 9" x 6.5"	power – 9" x 6.5"
Power – standard gas	175 KW/235 HP	142 KW/190 HP	145 KW/195 HP
Power – optional gas	172 KW/230 HP	172 KW/230 HP	not applicable
Power – optional diesel	not applicable	123 KW/165 HP	116 KW/155 HP
Running boards	flareless fiberglass	flareless fiberglass	flareless fiberglass
Sound system	AM/FM cassette	AM/FM cassette	AM/FM cassette
Steering column	tilt	tilt	tilt
Tire – spare	matching	matching	matching
Tires	LT225/75R16E black wall	LT225/75R16E black wall	P225/75R15 raised white letter
Torque – standard gas	385 N-m/285 ft. lbs.	407 N-m/300 ft. lbs.	393 N-m/290 ft. lbs.
Torque – optional gas	440 N-m/325 ft. lbs.	522 N-m/385 ft. lbs.	not applicable
Torque – optional diesel	not applicable	393 N-m/290 ft. lbs.	373 N-m/275 ft. lbs.
Towing – standard gas	5670 Kg/12500 lbs. GCWR	6124 Kg/13500 lbs. GCWR	4990 Kg/11000 lbs. GCWR
Towing – optional gas	5897 Kg/13000 lbs. GCWR	7711 Kg/17000 lbs. GCWR	not applicable
Towing – optional diesel	not applicable	5443 Kg/12000 lbs. GCWR	4082 Kg/9000 lbs. GCWR
Towing – std. (no cargo/passengers)	3000 Kg/6500 lbs. tow weight	3200 Kg/7000 lbs. tow weight	2600 Kg/5800 lbs. tow weight
Towing – optional gas	3200 Kg/7000 lbs. tow weight	4800 Kg/10500 lbs. tow weight	not applicable
Towing – optional diesel	not applicable	2500 Kg/5500 lbs. tow weight	1700 Kg/3800 lbs. tow weight
Towing	454 Kg/1000 lbs. tongue	431 Kg/950 lbs. tongue	317 Kg/700 lbs. tongue
Transmission	automatic – 4 speed w/OD	automatic – 4 speed w/OD	automatic – 4 speed w/OD
Wheels	steel with full wheel cover	steel with full wheel cover	GM factory aluminum
Window operation	power – front doors only	power – front doors only	power – front doors only
Window tint	tinted – all	tinted – all	tinted – all
Wipers	2 speed with intermittent	2 speed with intermittent	2 speed with intermittent
EXTERIOR DIMENSIONS			
Length – 190 or 170	5870 mm/19' 3"	5940 mm/19' 6" (with tire carrier)	5410 mm/17' 9" (with tire carrier)
Length – 210	not applicable	6280 mm/20' 7" (no tire carrier)	not applicable
Height – overall	2490 mm/8' 3"	2530 mm/8' 4"	2490 mm/8' 3"
Width – overall	2010 mm/6' 7"	2030 mm/6' 8"	2030 mm/6' 8"
Wheelbase	3240 mm/128"	3710 mm/146"	3175 mm/125"
Base weight – 190 or 170	2700 Kg/6000 lbs. (approx.)	2700 Kg/6000 lbs. (approx.)	2400 Kg/5200 lbs. (estimated)
Base weight – 210	not applicable	2900 Kg/6300 lbs. (approx.)	not applicable
Gross vehicle weight rating	3402 Kg/7500 lbs.	3900 Kg/8600 lbs.	3118 Kg/6875 lbs.
INTERIOR DIMENSIONS			
Standing height	1830 mm/72"	1870 mm/73.5"	1870 mm/73.5"
Double bed length	1870 mm/73.5"	1870 mm/73.5"	1870 mm/73.5"
Double bed width	1320 mm/52"	1320 mm/52"	1320 mm/52"
Single bed length	1780 mm/70" (left side) 1680 mm/66" (right side)	1780 mm/70" (left side) 1680 mm/66" (right side)	1780 mm/70" (left side) 1780 mm/70" (right side)
Single bed width	610 mm/24" (maximum)	610 mm/24" (maximum)	610 mm/24" (maximum)
King bed length – 190	1900 mm/75" (left side) 1860 mm/73" (right side)	1900 mm/75" (left side) 1860 mm/73" (right side)	not applicable not applicable
King bed length – 210	not applicable	1930 mm/76"	not applicable
King bed width	1870 mm/73.5"	1870 mm/73.5"	not applicable
Twin bed length – 190	1900 mm/75" (left side) 1850 mm/73" (right side)	1900 mm/75" (left side) 1850 mm/73" (right side)	not applicable not applicable
Twin bed length – 210	not applicable	1930 mm/76"	not applicable
Twin bed width	760 mm/30" (after extension)	760 mm/30" (after extension)	not applicable
Water tank – fresh	95 L/25 US gal.	115 L/30 US gal.	75 L/20 US gal.
Water tank – grey	65 L/18 US gal.	85 L/22 US gal.	95 L/25 US gal.
Water tank – black	45 L/12 US gal.	55 L/15 US gal.	40 L/10 US gal.

Features

STANDARD MOTOR HOME FEATURES

Aisle – 30" wide so 2 people can pass with ease
Battery – auxiliary deep cycle & isolator
Beds – 130 mm/5" dual density foam for box spring effect
Captain's seats – swiveling with adjustable lumbar supports
Carpet – 28 oz. 100% Dupont nylon
Connections – 110V & city water
Converter with charger – 110/12V (32 amp.)
Detectors – smoke, LP gas & carbon monoxide
Floor – lowered (1880 mm x 810 mm x 130 mm/74" x 32" x 5")
Furnace – LP gas automatic 'Suburban' (16000 BTU)
Lights – 12V florescent (2)
Microwave oven – 110V 'Panasonic' variable intensity with turntable (17 L/0.6 cu. ft.)
Monitor panel – water tanks levels & battery charge
Privacy area with bifold doors – patented
Range hood – 12V exhaust fan/light
Refrigerator – 12V/110V/LP gas 'Dometic' (3.0 cu. ft.)
Refrigerator venting – patented integrated
Sewage hose system – patented 'Dura-Drain' system
Storage trunk – rear (1520 mm x 690 mm x 300 mm/60" x 27" x 12", n/a with 170 or 190 models on Chevy chassis)
Storage volume – up to 2070 L/73 cu.ft. in 190 Models, 2610 L/92 cu.ft. in 210-Popular
Stove – LP gas two burner
Tank – LP gas (40 L/10 US gal./40 lbs.)
Toilet – marine 'Thetford' with foot pedal flush
TV antenna – 'Hide-A-Tenna' built in
TV cable connection – external
TV shelf – swiveling & pivoting allows viewing from front or rear
Water fill – fresh – located in passenger door step well to reduce clutter and prevent tampering with water supply
Water system – 12V demand with 'Shurflo' water pump
Water tank capacities (see Interior Dimensions)
Windows – 'Hehr' awning
Windows – roof – 3 with curtains

Options

MOTOR HOME OPTIONS

Air conditioner – 110V built-in 'Fedders' (7500 BTU)
Awning – box (3050 mm/10')
Dining table – cloverleaf (32" x 32" open, 22" x 22" closed)
Generator – 'Onan MicroLite' remote-start (2.8 KW)
Generator ready package – 'Onan'
Roof vent – 12V power 'FanTastic' with thermostat
Screen package for all van door windows & side door opening
Storage cabinet – replaces right lounge seat
Storage drawer – over cab (not recommended with 190-Popular)
Wardrobe – removable (interchangeable left lounge seat)
Water heater – LP gas 'Suburban' (23L/6 US gal., 12000 BTU)

AUTOMOTIVE OPTIONS

Engines (see Automotive Features)
Paint treatment – deluxe
Rust protection – 'Ziebart'
Spare tire kit – continental
Wheels – aluminum with steel spare (standard on 170-Versatile)

Warranties

CHASSIS:

Choice of 1 year/12,000 mile/20,000 Km "bumper to bumper" and 7 year/70,000 mile/115,000 Km "powertrain & anti-corrosion" limited warranty or 3 year/36,000 mile/ 60,000 Km "bumper to bumper" limited warranty as offered by Chrysler. Or 3 year/50,000 mile/80,000 Km limited "bumper to bumper plus" as offered by General Motors.

MOTOR HOME:

3 year/36,000 mile/60,000 Km limited warranty offered by Home & Park covering the manufacture of the motor home only (does not include the chassis or appliances).

APPLIANCES:

Those offered on the individual appliances by their respective name brand manufacturers.

IMPORTANT INFORMATION YOU SHOULD KNOW... PLEASE READ

Some units pictured with optional equipment. Certain options may require deletions of standard items or additions of other optional items in order to function properly. Restrictions or limitations may apply to certain options and/or chassis combinations. See your dealer for details.

As we are always working to improve our product, specifications and design are subject to change without notice or obligation whatsoever. Home & Park shall not be held responsible for errors or omissions contained herein or the delivery or non-delivery of any item herein.

Original and exclusive exterior and interior design and contents may not be duplicated. Same protected by U.S. Patent numbers Des. 276955, 4133347, 4550946, 4620741, 4685719, 4699207, 5103590, 5192111; Canadian Industrial Design number 47781; and Canadian Patent numbers 1200262, 1205103, 1207818, 1212398, 1232205, 1260043, 1260988, 1269802; other patents pending.

The drawings, photographs, literature and technical information contained herein are the exclusive property of Hanmar Motor Corporation. The above may not be duplicated, reproduced, used nor conveyed to others without our express written consent.

TM ® "Home & Park", "Roadtrek", "The Motor Home That Drives Like A Van", and "The Van That Think's It's A Motor Home" are registered trademarks of J.J. Hanemaayer and of which Hanmar Motor Corporation is a licensee and/or registered user.